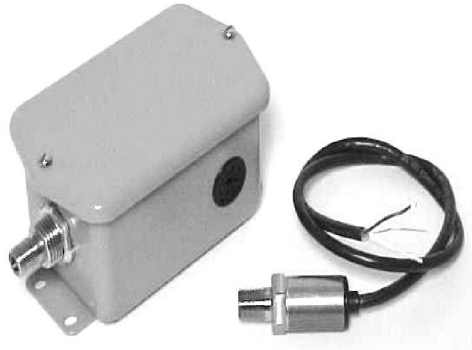


Gage Pressure Transmitter

ACI/GP



Features

- * Accuracy $< \pm 0.5\%$
- * Laser-welded Stainless Steel Design
- * Signal conditioning for calibration & temperature compensation
- * $< 1\text{ms}$ Response Time
- * 2 Year Warranty

Product Description

The ACI/GP is a two-wire, 4-20mA gage pressure transmitter. These units have been designed to provide excellent accuracy and reliability in typical industrial grade environments. Some of the most common applications include:

- Refrigeration Equipment
- Pumps and Compressor Control
- Spraying Systems
- Hydraulic Systems
- Flow

The ACI/GP pressure transmitters are compatible with a wide range of gases and liquids such as air, water, freons, hydraulic oil, ammonia, steam and many others. They are available in ranges from 0 to 15 up to 0 to 3000 PSIG. Others ranges may be available upon request.

All units are accurate to $\pm 0.5\%$ of full scale (includes non-linearity, hysteresis, and repeatability). The ACI/GP pressure transmitter offers a combined repeatability and hysteresis factor that is typically below $\pm 0.25\%$ of full scale. The GP pressure transmitter are both RFI and Reverse Polarity Protected.

The pressure port is a $\frac{1}{4}$ "-18 NPT Male fitting made of 304L & 316L Stainless Steel. Each unit is approximately 2.78 inches long and weighs approximately 3 ounces. A 2 foot shielded cable is supplied for making all of the proper connections. The ACI/GP may be ordered in an optional NEMA 4 rated enclosure.

All of these units come with a two-year factory warranty. For further information regarding this product, please contact ACI at the numbers listed below or visit our website at www.workaci.com

Product Specifications

Supply Voltage	+8 to 30 VDC	Accuracy (Non-linearity, Hysteresis, Repeatability)	75 to 3000 PSI $< 0.5\%$ of FS 15 to 50 PSI $< 1.00\%$ of FS
Operating Temp. Range	-40 to 221°F (-40 to 105°C)	Proof Pressure	3X Rated Pressure
Storage Temp. Range	-40 to 221°F (-40 to 105°C)	Supply Current	25mA Min.
Output Signal	4 to 20mA	Stability	0.25% FS / Year
Burst Pressure	5X Rated Pressure	Response Time	$< 1\text{ms}$
Process Fitting	$\frac{1}{4}$ "-18 NPT Male 304L & 316L Stainless Steel	Case	304L & 316L Stainless Steel
Weight	< 3.18 oz. (90 grams)	EMC Compliance	100 V/m

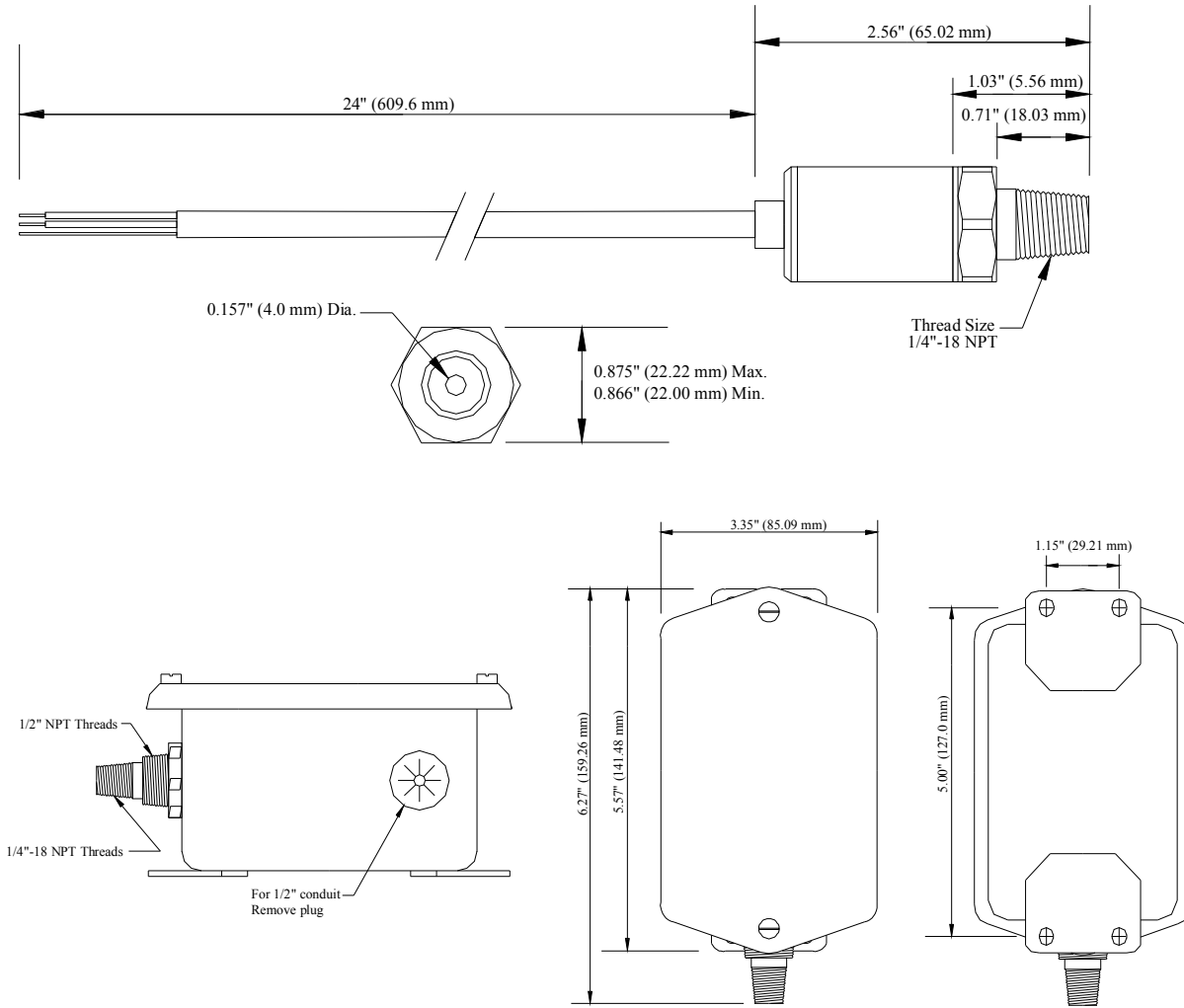
2305 Pleasant View Rd. ● Middleton Industrial Park ● Middleton, WI 53562

www.workaci.com

PH: (608) 831-2585 ● FAX (608) 831-7407

Filename: C000047 Rev 1.Doc

Dimensions



Ordering Information

Pressure Range
 A/GP - [] - []
 ↑ ↑
 0-15 psig NEMA 4 (Optional)
 0-50 psig
 0-75 psig
 0-100 psig
 0-200 psig
 0-300 psig
 0-500 psig
 0-750 psig
 0-1000 psig
 0-1500 psig
 0-2000 psig
 0-3000 psig

Example: A/GP-(0-50) or A/GP-(0-100) or A/GP-(0-500) or A/GP-(0-3000)-NEMA 4

2305 Pleasant View Rd. ● Middleton Industrial Park ● Middleton, WI 53562
 www.workaci.com

PH: (608) 831-2585 ● FAX (608) 831-7407

Filename: C0000047 Rev 1.Doc